



OUR INTERNATIONAL DISTRIBUTORS



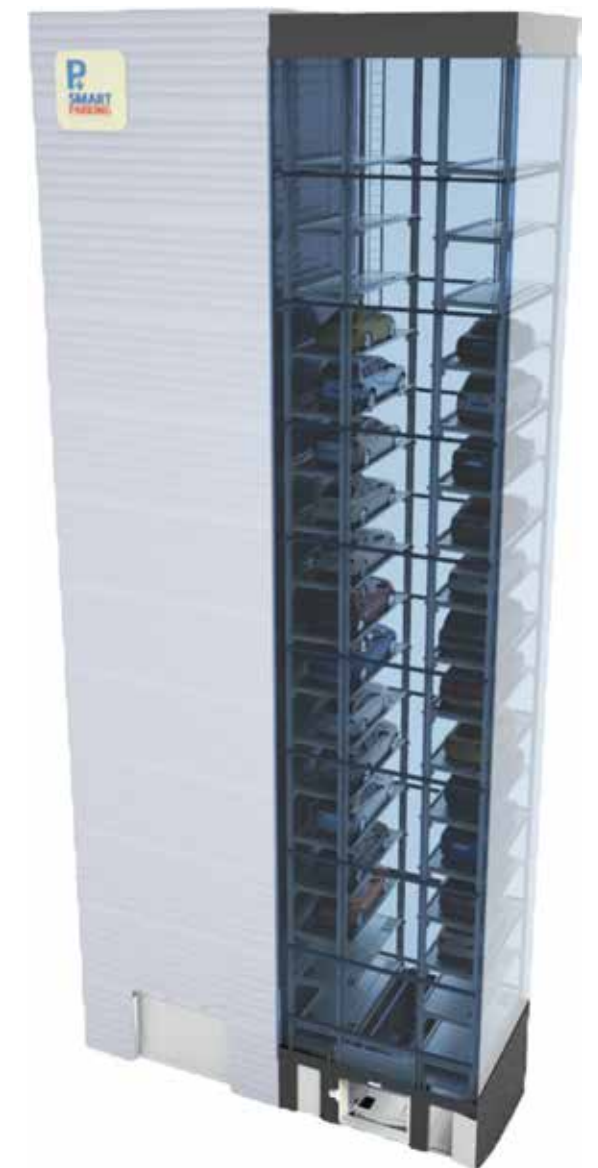
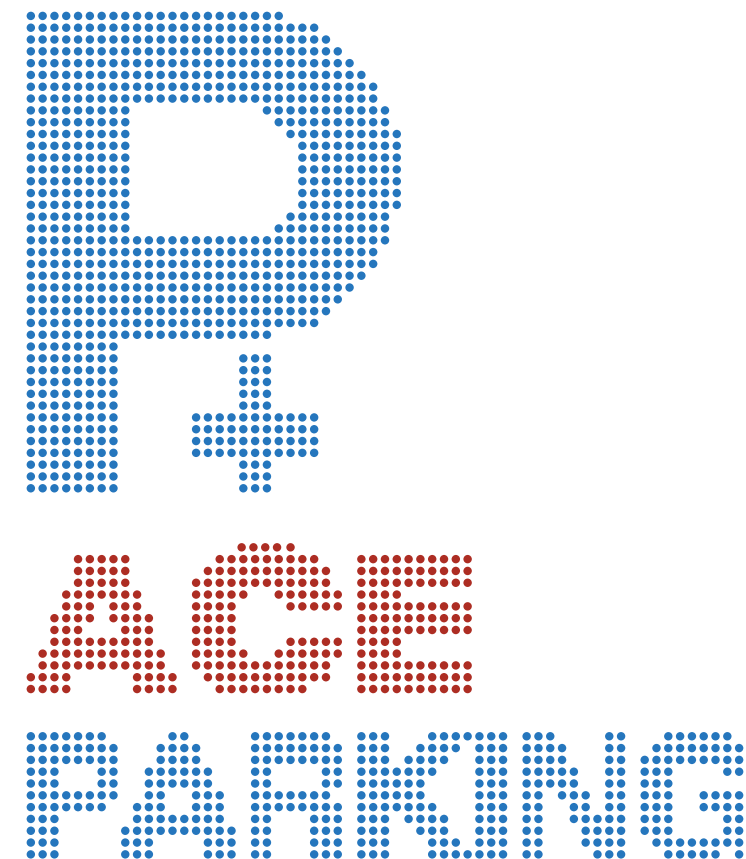
- | | | |
|-----------|--------------|--------------|
| Austria | Bahrain | Canada |
| Argentina | New Zealand | Libya |
| Bulgaria | India | United State |
| Paraguay | Peru | Cyprus |
| Egypt | Costarica | Uruguay |
| Iran | Panama | Czech |
| Colombia | Saudi Arabia | Puerto Rico |
| Singapore | Qatar | Denmark |
| Chile | Iraq | Syria |
| Estonia | UAE | Greece |
| Oman | Lituania | Kazakhsta |
| Hungary | Romania | Russia |
| Latvia | Turkey | Ukraine |
| Norway | | |
| Spain | | |



■ OFFICE : B413 Woolim Lions Valley,
18 Yangpyeong-dong 5ga, Yungdeungpo-gu, Seoul, Korea
TEL : +82-2-2638-7750~2
FAX : +82-2-2638-7753
www.dysmart.com
dypc01@empal.com

■ FACTORY : 149-3 Sangma-ri, Daegot-myon, Gimpo city,
Kyonggi-do, Korea
TEL : +82-31-988-3765

* The technical data and illustrations are subject to change for improvement without any notice



ACE PARKING



Illuminaire, Singapore

Advantage of ACE PARKING

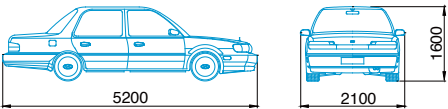
- A tower parking solution for parking up to 18 ~ 60 cars in a unit
- Small floor plan of 49.6m²only for parking numerous cars
- Multiple installation in series
- Integrated or external turn table gives an easy access
- SUV(2400kg) and full size sedan(2150kg) can be parked in an unit
- Ideal for residential / office buildings, rentacar company
- Low noises / vibrations
- Various safety devices
- Easy operation

Technical specification (Typ.)

Parking Capacity		18 ~ 40 slots	42 ~ 60 slots
Type		Elevator(Pallet type)	
Max. Available car	Length	5200 mm	
	Width	2100 mm	
	Height	1600 mm (sedan) /1850 mm (SUV)	
	Weight	2150 (sedan) / 2400kg (SUV)	
Traction Unit	Motor	30 KW x 4P & D.C Brake	37 KW x 4P & D.C Brake
	Reducer	Helical i=1/30	Helical i=1/24
	Speed	60 ~ 75 m/min	90 ~ 120 m/min
	Mechanism	Wire rope (8 wires), 2:1 Rope way	
Lift Cage	Pallet	Motor	1.5 KW x 4P & D.C Brake
		Reducer	Helical i=1/25
		Speed	26 m/min
		Mechanism	Chain conveyor & Hook pin type
	Turn Table	Motor	3.7 KW x 4P & D.C Brake
		Reducer	Helical worm i=1/125
		Speed	2.5 RPM
		Mechanism	Direct driving by Selwing gear & Pinion
Electric Control	Controller	Vector inverter	
	Speed control	Vector or PWM control (Inverter control)	
	Driving control	PLC control	
	Operation	Touch screen or computer(optional)	
Power	Equipment	AC 380V, 3PH, 50/60Hz or AC 220V, 3PH, 50/60Hz	
	Lamps	AC 220V, Single PH, 50/60Hz	
Sliding door		2500(W) x 1800(H) (Sedan), 2000(H) (SUV)	
Safety Device		Guide lamps at entrance and inside Guide mirror and instruction boards Photo sensors for positioning car on entry level Detector of traction wire breakage Protector for cage and pallet against overrun Emergency stop switch	

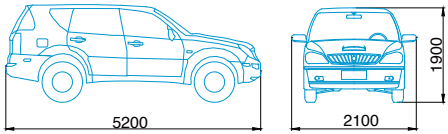
Max. available car in AC-L series

Total length	5200mm
Total width	2100mm
Total height	1600mm
Total weight	2150kg



Max. available car in AC-SU series

Total length	5200mm
Total width	2100mm
Total height	1900mm
Total weight	2400kg



Ace Parking for medium size solution

■ **ACE PARKING** is a vehicle elevator, using traction devices for lifting up/down a car on a pallet. The lift cage deposits or retracts the pallet to/from the designated position automatically. Due to the silent operation, this type of parking solution is ideal for residential or office building as a built-in or can be set up independantly for the purpose of parking cars only. Its simple structure hardly raises any troubles and has the outstanding space-efficiency. The integrated system solution can be operated unattendedly for whole parking process. The entry gate can be located on a lower, mid or upper position for fitting the installation environment.

Steel structure

The steel structure of Ace Parking System consists traction devices for elevating up and down the lift cage and slots for carrying car pallets.This is designed structually to withstand regional heavy wind or earthquake.

Lift Cage

This device, basically, elevates up and down a car on a pallet. And this also deposits, retrieve or rotates a car. This device travels with security between depositing position and entry level

Pallet

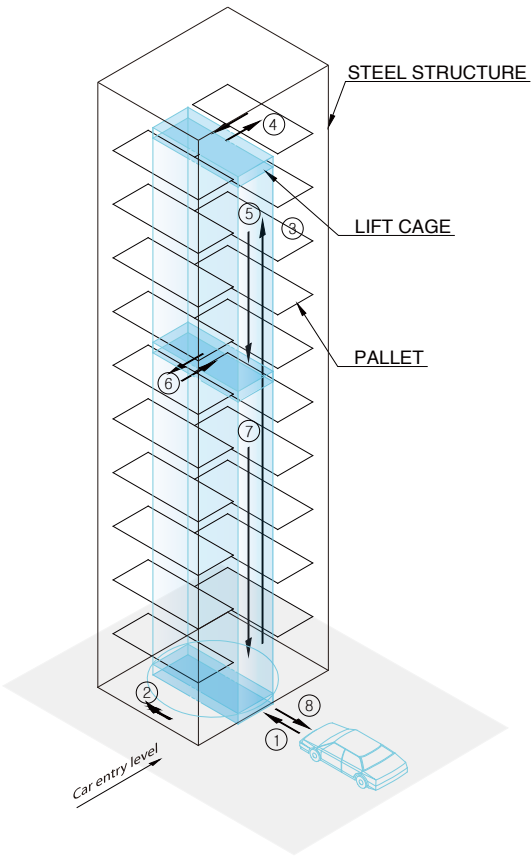
This is a loading device, whose funtion is to deposit or retrieve various sizes of car to/from standardized slots

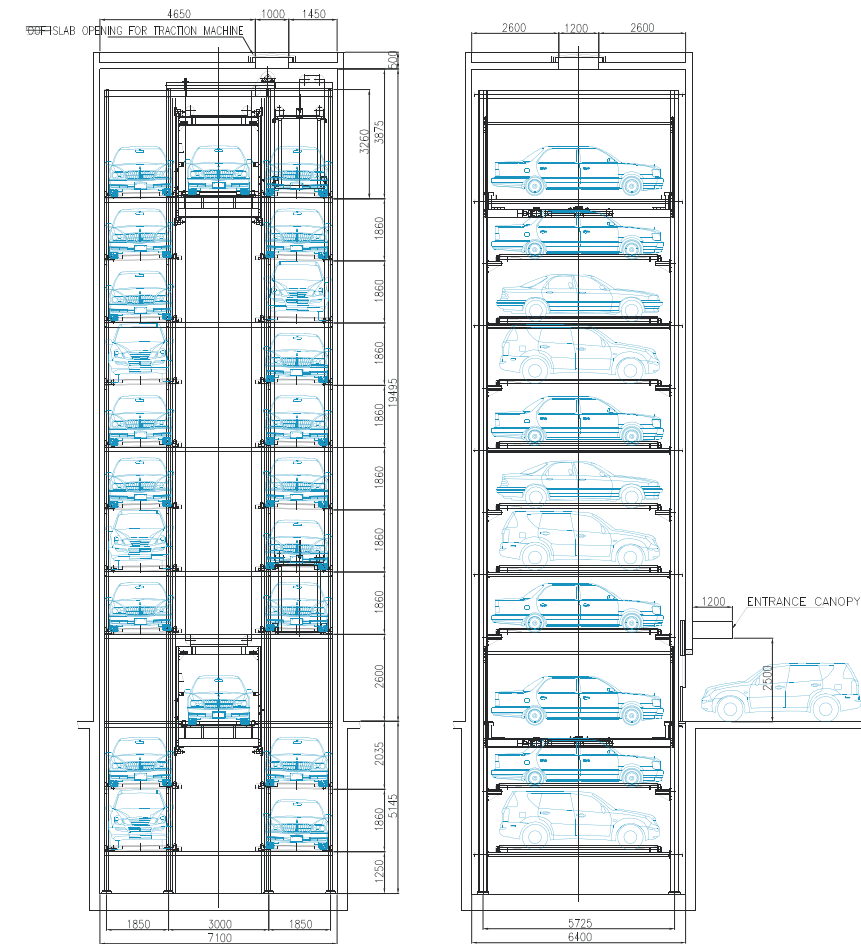
Traction unit

This enables lift cage to elevate up and down at high speed. This unit is designed to stand against live loading and various dynamic load by sufficient safety factors

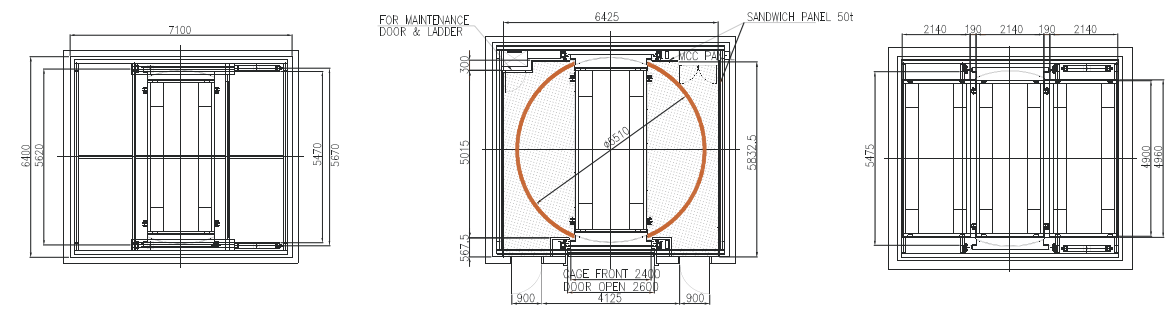
Operation Flow

- ① Enters into entry station
- ② Turn table rotates car by 180
- ③ Lift cage elevates up the car
- ④ Car on pallet is deposited or retrieved
- ⑤ Lift cage elevates up or down
- ⑥ Lift cage picks up a blank pallet
- ⑦ Lift cage elevates down to the entry station.
- ⑧ Retrieve your car

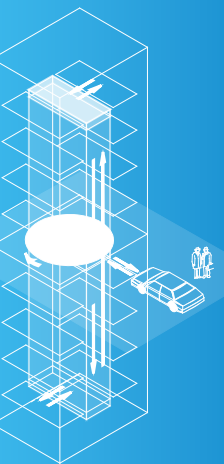


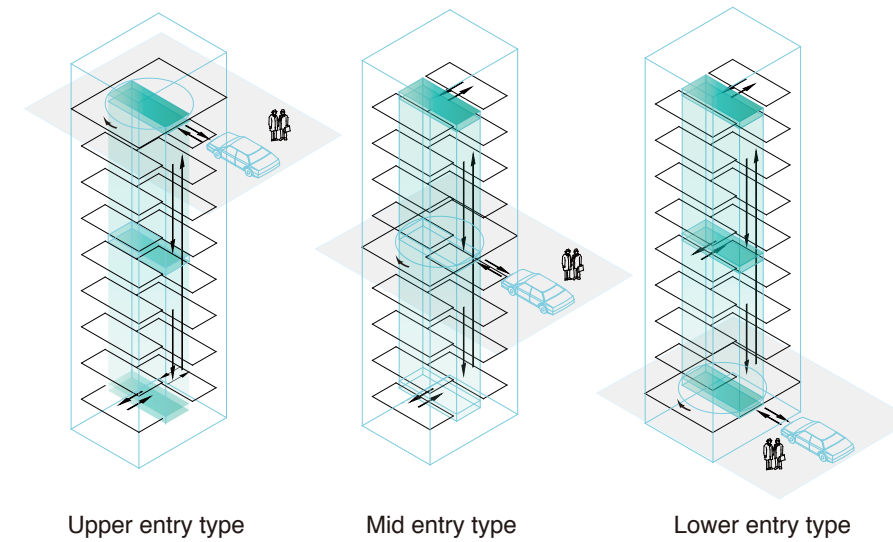


SIDE ELEVATION



PARKING LEVEL TYP. PLAN





KMCA, Seoul

Figure 10 shows two schematic diagrams of the entrance area. The left diagram, labeled "View of sliding door", shows a front view of a sliding door with a width of 2600 and a height of 1800. It features a green emergency stop button and a red stop button at the top center, and two upward-pointing arrows indicating the door's movement. The right diagram, labeled "View of entrance", shows a perspective view of the entrance area with a similar button layout at the top.



Entrance

